

Proposal for a 6-step-approach for differential diagnosis of neonatal erythroderma

E. Cuperus¹, A. Bygum^{2*}, L. Boeckmann^{3*}, C. Bodemer^{4*}, M.C. Bolling^{5*}, M. Caproni^{6*}, A. Diociaiuti^{7*}, S. Emmert^{3*}, J. Fischer^{8*}, A. Gostynski^{9*}, S. Guez^{10*}, M.E. van Gijn^{11*}, K. Hannulla-Jouppi^{12*}, C. Has^{13*}, A. Hernández-Martín^{14*}, A.E. Martínez^{15*}, J. Mazereeuw-Hautier^{16*}, M. Medvecz^{17*}, I. Neri¹⁸, V. Sigurdsson^{19*}, K. Suessmuth^{20*}, H. Traupe^{20*}, V. Oji^{20*}, S.G.M.A. Pasmans^{1*}

1 Erasmus MC University Medical Center Rotterdam-Sophia Children's Hospital, Department of Dermatology, Center of Pediatric Dermatology, The Netherlands

2 University of Southern Denmark, Clinical Institute, Denmark & Odense University Hospital, Department of Clinical Genetics, Denmark

3 University Medical Center Rostock. Clinic and Policlinic for Dermatology and Venereology. Rostock, Germany.

4 Department of Dermatology, Reference Center for Genodermatoses (MAGEC), Necker-Enfants Malades Hospital (AP-HP5), Paris-Centre University, Imagine Institute, INSERM, Paris, France.

5 University of Groningen, University Medical Center Groningen, Department of Dermatology, Groningen, the Netherlands

6 Department of Health Sciences, Section of Dermatology, USL Toscana Centro, Rare Diseases Unit, University of Florence, Florence, Italy.

7 Dermatology Unit and Genodermatosis Unit, Genetics and Rare Diseases Research Division, Bambino Gesù Children's Hospital, IRCCS, Rome, Italy.

8 Institute of Human Genetics, Medical Faculty and Medical Center - University of Freiburg, Freiburg, Germany

9 Department of Dermatology, Maastricht University Medical Center, Maastricht, The Netherlands; GROW School for Oncology and Developmental Biology, Maastricht University Medical Center, Maastricht, The Netherlands

10 Pediatrics Department, Fondazione IRCCS Ca' Granda Ospedale Maggiore Policlinico, Milano, Italy.

11 University of Groningen, University Medical Center Groningen, Department of Genetics, Groningen, the Netherlands

12 Department of Dermatology and Allergology, University of Helsinki and Helsinki University Central Hospital, HUS, Helsinki, Finland

This article has been accepted for publication and undergone full peer review but has not been through the copyediting, typesetting, pagination and proofreading process, which may lead to differences between this version and the [Version of Record](#). Please cite this article as [doi: 10.1111/jdv.18043](https://doi.org/10.1111/jdv.18043)

This article is protected by copyright. All rights reserved

13 Department of Dermatology, Medical Center-University of Freiburg, Faculty of Medicine, University of Freiburg, Freiburg, Germany

14 Department of Dermatology, Hospital Infantil Niño Jesús, Madrid, Spain

15 Pediatric Dermatology, Great Ormond Street NHS Foundation Trust, London, UK

16 Dermatology Department, Reference Center for Rare Skin Diseases, Toulouse, France

17 Department of Dermatology, Venereology and Dermatoooncology, Semmelweis University, Budapest, Hungary

18 Dermatology - IRCCS Policlinico di Sant'Orsola - Department of Experimental, Diagnostic and Specialty Medicine (DIMES) Alma Mater

Studiorum University of Bologna, Bologna, Italy

19 University Medical Center Utrecht and Utrecht University, Department of Dermatology, Utrecht, The Netherlands

20 Department of Dermatology, University Hospital of Münster, Münster, Germany

* Member of the ERN-SKIN-subthematic group Ichthyosis

Corresponding author:

s.pasmans@erasmusmc.nl, Center of Pediatric Dermatology-Department of Dermatology Sophia
Children's Hospital Sp-1540, Erasmus MC University Medical Center Rotterdam
Wytemaweg 80; 3015 CN Rotterdam; The Netherlands; Phone: +31107034580

Keywords: neonatal erythroderma, congenital erythroderma, immunodeficiencies, ichthyosis,
Netherton syndrome, diagnostics, protocol, scoping review, literature review

Abstract word count: 296

Word count: 5108.

Tables/figures: 2/2 (7 as supplement)

References: 127

Conflicts of interest: none to declare

Financial support: none to declare

Data availability statement: The data that supports the findings of this study are available in the
supplementary material of this article

ABSTRACT

The broad differential diagnosis of neonatal erythroderma often poses a diagnostic challenge. Mortality of neonatal erythroderma is high due to complications of the erythroderma itself and the occasionally severe and life-threatening underlying disease. Early correct recognition of the underlying cause leads to better treatment and prognosis. Currently, neonatal erythroderma is approached by a case by case basis.

The purpose of this scoping review was to develop a diagnostic approach in neonatal erythroderma. After a systematic literature search in Embase (January 1990 – May 2020, 74 cases of neonatal erythroderma were identified, and 50+ diagnoses could be extracted. Main causes were the ichthyoses (40%) and primary immunodeficiencies (35%). Congenital erythroderma was present in 64% (47/74) of the cases, predominantly with congenital ichthyosis (11/11; 100%), Netherton syndrome (12/14, 86%), and Omenn syndrome (11/23, 48%). Time until diagnosis ranged from 102 days to 116 days for cases of non-congenital erythroderma and congenital erythroderma respectively. Among the 74 identified cases a total of 17 patients (23%) died within a mean of 158 days and were related to Omenn syndrome (35%), graft versus host disease (67%), and Netherton syndrome (18%). Disease history and physical examination are summarized in this paper. Age of onset and a collodion membrane can help to narrow the differential diagnoses. Investigations of blood, histology, hair analysis, genetic analysis and clinical imaging are summarized and discussed. A standard blood investigation is proposed and the need for skin biopsies with Lympho-Epithelial Kazal-Type related Inhibitor-staining is highlighted. Overall, this review shows that diagnostic procedures narrow the differential diagnosis in neonatal erythroderma. A 6-step flowchart for the diagnostic approach for neonatal erythroderma during the first month of life is proposed. The approach was made with the support of expert leaders from international multidisciplinary collaborations in the European Reference Network Skin-subthematic group Ichthyosis.

BACKGROUND

Neonatal erythroderma (NE) is erythema or generalized dermatitis covering at least 90% of the body surface, present at birth or appearing during the first 4 weeks after delivery ¹. Incidence rate of NE patients in the Netherlands is estimated among dermatologists to be 10 patients per 100,000 newborns ². Erythroderma itself is not a diagnosis, but a phenotype. Proper diagnosis is a challenge due to low incidence, phenotypical heterogeneity, and a wide range of possible underlying diagnoses (**Fig. 1**). Etiologically, six main categories are known: congenital ichthyoses (including Netherton Syndrome (NS)), primary immunodeficiencies (PIDs), metabolic disorders, drug use, cutaneous infections and 'other' ³⁻⁵. The 'other' group contains common dermatoses such as atopic dermatitis, psoriasis and seborrheic dermatitis, which mainly occur after 3 months of age ^{1,3,4,6}. Congenital ichthyosis (including NS) (46%) and PIDs (30%) were the main causes in two studies, although erythrodermic cases from both neonates and infants were included ^{3,4}. Previously reported mortality rate is high (16% after a mean of 17 months) due to complications of the erythroderma such as dehydration, electrolyte imbalance and infections, or due to severe and life-threatening underlying diseases such as PID and metabolic disorders ^{4,7}. An optimal diagnostic approach and awareness of underlying causes is mandatory to prevent diagnostic delay, thereby decreasing the rate of complications and death. Since a differential diagnosis is often made on a case-by-case basis, an algorithmic approach would be recommended. Several authors proposed a multidisciplinary/diagnostic approach, which is mainly based on a differential diagnosis perspective and not on the clinical presentation ^{1,6,8-11}. The present systematic literature search provides a scoping overview of diagnostic characteristics in cases of neonatal erythroderma during the neonatal period specifically that can lead to a timely diagnosis. Based on these results and the opinion of experts, a protocol for NE using an algorithmic approach is proposed.

METHODS

A scoping review was performed based on a systematic literature search.

Search criteria and strategies

All publications which described diagnostic procedures in NE within the first year were included.

A search strategy was developed by an experienced information specialist. First search (April 2020) was followed by a more extensive search (May 2020). The search was carried out in EMBASE, using specific search terms (**Supplementary S1**). Publications were selected based on title and/or abstract. When abstracts were unavailable, full text was consulted. Reference lists of eligible articles were checked for other relevant publications. Finally, the included articles were analyzed for study parameters, focused on diagnostic procedures, clinical symptoms, numbers of patients, age range and diagnosis.

Inclusion and exclusion criteria

Scientific publications (January 1990 - May 2020) were screened. English publications with clinical information (clinical and neonatal characteristics, extracutaneous and systemic symptoms) and/or diagnostic procedures (e.g. laboratory blood analysis, bacterial culture swabs, hair analysis, histopathology or genetics) on NE before the age of 1 year, were included. Publications on NE that contained information about family (consanguinity, family history) and pregnancy (premature birth, complications) were also included. Review articles, expert opinions, case reports and case series were eligible. Additionally, textbooks on (pediatric) dermatology were screened. Publications with erythroderma, starting after the 1st month of age, were excluded. Publications were excluded when diagnostics or specific details of the clinical onset of NE were absent. Poster presentations, conference abstracts and publications with unavailable full text were excluded. As underlying diagnoses, Congenital Hemidysplasia with Ichthyosiform erythroderma and Limb Defects (CHILD) syndrome has been excluded due to an unilateral erythroderma and Leiner disease has been excluded because in former cases the disease seemed to be related to NS and Omenn syndrome (OS) ¹¹⁻¹³.

Group Experts

Members of the European Reference Network (ERN)-SKIN-subthematic group Ichthyosis provided their expert opinion on the review and algorithmic diagnostic approach.

RESULTS

The literature search identified 2127 publications. Finally, 183 publications were screened for further analysis leaving 98 publications for qualitative analysis (**Supplementary S2**) in which eventually 74 cases were identified. The level of evidence was low (level 4) (59 case reports and 13 case series) ¹⁴.

Underlying diagnoses in neonatal erythroderma

Diagnoses of the 74 case reports, including age of onset of the erythroderma and the mean delay until the final diagnosis, are summarized in **Supplementary S3**. Main causes were subtypes of ichthyoses (30/74; 40%) and PIDs (26/74; 35%). Syndromic ichthyoses subtypes were more prevalent (23/30; 77%). Ectodermal dysplasia (AEC) was described in 4 cases (6%). Other causes were infections (4/74; 5%, all SSSS), metabolic disorders (2/74; 3%), and drug induced erythroderma (DIHS) (1/74; 1%). A complete overview of reported underlying diagnoses of congenital erythroderma and NE are summarized in **Table 1**. Underlying diagnoses described in reviews or textbooks are marked with an asterisk. Diagnoses that can be accompanied by a collodion membrane are indicated. Relatively new diagnoses such as Severe dermatitis, multiple Allergies, and Metabolic wasting (SAM) syndrome (*DSG1* gene), which can resemble NS, or SAM-like phenotypes (*DSP* gene)⁶³, and autosomal recessive keratitis ichthyosis deafness (KIDAR) syndrome (*AP1B1* gene) must be considered ^{36,62}.

Congenital erythroderma was described in a total of 47/74 cases (64%), predominantly in congenital ichthyoses (11/11; 100%), NS (12/14; 86%) and OS (11/23; 48%). In a study on PIDs, congenital erythroderma was frequently seen in cases of Autosomal Dominant-Hyper-IgE syndrome (AD-HIES) (65-80%), Autosomal Recessive Hyper-IgE syndrome (AR-HIES) (24%), and Wiskott-Aldrich syndrome (WAS) (rare) ^{67,79}. NS often shows erythroderma within 1-2 days after birth ⁷⁹. Metabolic disorders and Sjögren-Larsson Syndrome (SLS) should be considered as differential diagnoses when erythroderma develops in the first month of life ^{6,80}. Although one case of Immunodysregulation Polyendocrinopathy Enteropathy X-linked (IPEX) syndrome was

described in the first month, erythroderma in IPEX usually occurs after the first month ⁶⁷.

Although congenital psoriasis was observed in two cases, it is rare in the neonatal phase ^{1,6,80}.

Erythroderma due to infections and drug reactions can occur at any age.

Time until final diagnosis differs with age of onset (**Supplementary S3**). Mean age of diagnosis after the onset of the erythroderma in cases of congenital erythroderma vs non-congenital NE is 116 days (range 1 day-5 years, median 20 days) and 102 days (range 1 day-5 years, median 15 days) ($P<.4303$), respectively. Overall, the longest delay was observed in NS, IPEX, OS and non-syndromic forms of ichthyoses such as ichthyosis with confetti (IWC), lamellar ichthyosis (LI) and congenital ichthyosiform erythroderma (CIE).

HISTORY FEATURES

Pregnancy, family history, consanguinity and gender

No details are known about complications during pregnancy as a possible underlying cause of NE, and less is known about the correlation between birth weight or pregnancy period and diagnostic outcome. From the 74 cases, details were extracted about pregnancy, drug use postpartum, family history, consanguinity and neonatal characteristics e.g. gender. Details of the pregnancy period were described in 39/74 of cases. Prematurity would be more likely in cases of ichthyosis prematurity syndrome (IPS) and collodion babies ^{21,81}. Preterm birth was described in 15/74 cases (median 35 weeks; range 26-36 weeks), mainly in neonates with NS (n=5) (**Supplementary S3**), and one collodion baby (out of 2) was born prematurely (33 weeks). Family history was positive in 13/74 cases and negative in 28/74 cases. In the present case series, a positive family history for atopy, PID, ichthyosis, psoriasis and NS increased the risk of the same diagnosis in the newborn. Besides NS and OS, family history of atopy was also reported in cases of seborrheic dermatitis, atopic dermatitis, and selective IgA deficiency ⁴. Familial erythroderma was reported in cases of OS and NS ⁴. Spontaneous abortion was reported in a case of Harlequin ichthyosis (HI), while unexplained death of siblings was reported in families with PID and NS ⁴. Consanguinity was reported as a risk factor for NE in cases of ichthyosis ((25%), NS (88%), PID (33%), and in metabolic disorders ^{4,47}. Variations exist due to cultural and regional backgrounds, e.g. in Egypt consanguinity was reported in the majority of congenital ichthyoses (79%), of which LI constituted 32% ⁸⁰. Chanarin-Dorfman syndrome (CDS) was found in patients with consanguine parents from the Mediterranean, Middle-east, Saudi Arabia, India, and Japan ⁸². Consanguinity was reported in 9/74 cases of which seven had lethal complications (**Supplementary S4**). The majority of 14 NS cases were male (57%), whereas in 23 cases of OS the majority (57%) were female. One study reported a female predominance in NS ⁸³, however, not confirmed by others ⁸⁴. Male predominance (ratio 2,5:1) was suggested in diffuse cutaneous mastocytosis (DCM) ⁷³.

Medication and nutrition

Ceftriaxone, vancomycin and phenytoin can induce NE ^{6,10,69}. Although treatment with penicillins, aminoglycosides and cephalosporines can cause an erythematous rash, it rarely results in erythroderma ¹⁰. Zinc deficiency is a significant finding in acrodermatitis enteropathica, although herein the erythroderma rarely occurs in the neonatal period.

Specifically related with NE, holocarboxylase synthetase deficiency manifests with alopecia, dehydration, secondary cutaneous candidiasis, and ketoacidosis. Patchy alopecia and acrodermatitis enteropathica like skin lesions are suggestive for biotinidase deficiency. Psoriasis like scaling appears periorificial before it generalizes. As human milk contains biotins, clinical manifestations in biotinidase deficient neonates occur earlier in breastfed than in formula fed babies ¹⁰.

PHYSICAL EXAMINATION

Collodion membrane and scaling

A collodion membrane is a descriptive term for a transient condition in newborns, without implicating a specific diagnosis or disorder⁸⁵. It can occur with erythroderma or the erythroderma appears when the collodion membrane disappears^{1,4,6}. The collodion membrane usually sheds within 3-4 weeks after birth⁸⁵. In 10% of cases a collodion membrane sheds, without leaving any sign of ichthyosis and is known as self-healing collodion baby (SHCB, also known as self-improving congenital ichthyosis or lamellar ichthyosis of the newborn)⁸⁶. The most common related disorders associated with the collodion membrane are inherited ichthyoses (**Table 1**)⁸⁵⁻⁸⁸. Inherited ichthyosis has been divided in non-syndromic ichthyoses, syndromic ichthyoses and unspecified^{86,89,90}. From other studies, in 90% of cases of collodion babies, non-bullous ichthyoses were the underlying diagnosis^{1,80}. From the case series, 4/74 cases reported a collodion membrane: IWC, LI, Gaucher disease, and holocarboxylase deficiency.

Rubio-Gomez et al. described a severity score for collodion baby in order to predict the underlying diagnosis, based on clinical characteristics, such as an ectropion and eclabium²¹. A generalized collodion membrane was more common in autosomal recessive congenital ichthyosis (ARCI), while partial involvement was more frequent in unspecified congenital ichthyosis and syndromic ichthyosis²¹. A 15- year retrospective study on collodion babies in the Netherlands could not confirm this severity score⁹¹.

The presence and type of scaling in patients with NE can help in the differential diagnosis⁶. Neonatal scaling and exfoliative erythroderma are suggestive for ichthyoses and NS⁶. In ichthyosis, rough, dry, scaly skin is commonly seen; brown, dark scaling (frequently with collodion membrane) is typical for LI, while brown and fine white scaling with erythroderma is suggestive for CIE^{3,6}. Annular scaling is suggestive for NS, but the typical ichthyosis linearis circumscripta is not always present⁷⁹. Psoriasis can resemble ARCI, but usually more areas of unaffected skin can be seen⁶. Recalcitrant diaper dermatitis with generalization and pustules, sometimes with fever, could suggest erythrodermic psoriasis, while greasy scales on scalp (cradle

cap) and skin folds (axilla, neck, retro auricular and diaper areas) suggests seborrheic dermatitis¹⁰. Perioral scale crusts in combination with desquamation, peeling, and a characteristic tenderness of the skin suggests SSSS. Periorificial psoriasiform scaling should also suggest metabolic diseases such as holocarboxylase deficiency, biotinidase deficiency or acrodermatitis enteropathica. Due to maternal zinc supplementation, signs of acrodermatitis enteropathica in the neonatal period are rare, especially an erythrodermic phenotype. Collaret scales are typical for congenital cutaneous candidiasis (CCC). Skin induration and pruritus is suggestive for a PID⁴, although pruritus can also manifest in NS, scabies, or desmosomal disorders, such as SAM syndrome⁶².

Alopecia, bullae and pustules

Alopecia is common (45-46% of cases) and is considered as a complication of any severe type of NE^{3,4}. It frequently occurs in PIDs, particularly in OS⁶, but also presents in metabolic disorders^{4,10}. Alopecia was mentioned in 12/74 cases: trichothiodystrophy (TTD) (1/1; 100%), NS (4/13; 31%), OS (6/23; 26%), and AEC syndrome (1/4; 25%). Alopecia totalis or alopecia of eyebrows and eyelashes is suggestive for a PID^{4,6}. Bullae can be seen in epidermolytic ichthyosis (EI) (formerly known as bullous ichthyosis, keratinopathic ichthyosis, or epidermolytic hyperkeratosis), staphylococcal scalded skin syndrome (SSSS), and DCM. In EI, the bullae will diminish over time and are replaced by diffuse hyperkeratosis⁸⁶. In SSSS, the skin is usually painful and the child can present with fever, general malaise and irritability^{6,92}. The erythroderma starts abruptly with bullae developing within the erythematous area within 24-48 hours⁹². There can be desquamation with scalded appearance, mainly in friction zones, periorificial cracking and a positive Nikolsky sign⁹². Mucosae are usually not affected and the erythema often starts in the umbilical area (omphalitis) and diaper area (e.g. pustules, impetigo and cellulitis)⁹². In neonatal DCM, a red skin and blistering was reported in 17/22 cases (79%)⁷³. Diffuse erythroderma is unusual in DCM that may show an indurated, thickening of the skin (peau d'orange)⁶. Extensive blistering with positive Darier sign is a more frequent presentation⁶. In CCC, papules and pustules may evolve into NE and will usually spare the oral cavity and diaper area, but may include palms and soles⁶. Widely scattered spots on placenta and umbilical cord are a clue to the

diagnosis^{6,9}. In CCC, as being a possible opportunistic infection, one must be aware of an underlying PID such as severe combined immunodeficiency (SCID)⁹³. Systemic infections are seen especially in premature infants⁶.

Extracutaneous involvement and systemic symptoms

Extracutaneous symptoms can occur in other organ systems and are often present in syndromic ichthyoses, PIDs and metabolic disorders^{12,94}. Common systemic symptoms in NS are failure to thrive (FTT) and hypernatremic dehydration⁹⁵. FTT is absent in atopic dermatitis, minimal in ichthyosis, but was described in 69% of erythrodermas, predominantly in NS and all PIDs^{4,10,55}. However, due to a protective effect of maternal antibodies, PIDs rarely give systemic symptoms at birth¹⁰. NS is highly suspected when FTT is combined with a mild to severe erythroderma, sepsis and hypernatremic dehydration⁶. A PID (OS or severe combined immunodeficiency (SCID)) should be suspected with lymphadenopathy and hepatosplenomegaly in combination with diarrhea and/or FTT^{3,4,6}. Opportunistic infections and candidiasis are mainly seen in PIDs⁴.

Specific combinations of cutaneous, extracutaneous and systemic symptoms can be found in NS, CDS, KID, and DCM as showed in **Supplementary S5**^{79,93,95,96}. Metabolic diseases are suspected when desquamative erythroderma is accompanied with neurological manifestations such as coma⁶.

Systemic symptoms and presence of syndromic symptoms of the 74 cases are summarized in **Supplementary S4**. From these 74 cases, 17 died (23%) (range 3 days – 19 months; mean 158 days; median 60 days), with high individual mortality rates for OS (2/8; 35%), Graft-versus-Host Disease (GvHD) (2/3; 67%), metabolic disorders (1/3; 33%), AEC syndrome (1/4; 25%) and NS (2/14; 18%). Complications described are septic shock, renal or hepatic failure, multi-organ failure, secondary hemophagocytic syndrome, failure of the central nervous system, respiratory failure, malnutrition, anemia, thrombocytopenia, and extensive diarrhea.

ADDITIONAL TESTING

Skin smears and culturing

If CCC or another fungal infection is suspected, a potassium hydroxide smear is recommended. A fungal culture and eventually polymerase chain reaction (PCR) can support the diagnosis ⁹⁷. If a local *S. aureus* or another infection such as SSSS is suspected, skin swabs from infected sites or from eyes, nose, umbilicus and the vagina of the mother should be sent for bacterial culture ^{7,92,97}.

Blood tests

Sarkar stated that laboratory analysis in NE would contribute minimally and advices to start laboratory analysis after exclusion of atopic dermatitis, seborrheic dermatitis, ichthyosis, and drug use ⁹⁷. We summarized the individual elements of laboratory tests as recommended by other authors (**Table 2**). These can be categorized in NE in general or specifically when certain diagnoses are suspected and are stratified as 'standard test' or as 'on indication'. Hypernatremic dehydration and hypoalbuminemia can occur in any case of NE but hypernatremia was more frequently reported in NS ^{4,6}. Eosinophilia is common in NS ^{4,83,97} although no relation between eosinophilia and severity of NE or underlying diagnosis in NE could be found ^{3,4}. In DCM, elevated levels of serum tryptase in adults are correlated with systemic involvement in cutaneous mastocytosis, but this correlation has not been found in children ¹⁰¹. Laboratory results and other diagnostics in the 74 patients are summarized in **Supplementary S6**.

Identifying SCID-PIDs, newborn screening can be facilitated by quantifying T-cell receptor excision circles (TRECs) and kappa deleting-recombination excision circles (KRECs) ^{99,100}. A quantitative assay of immunoglobulin subsets with flow cytometry is recommended ^{97,102}. However, immunoglobulins in neonates are not fully produced yet. Why immunoglobulin-E (IgE) is increased in neonates is unknown. IgE in newborns is well researched in relation to the risk of developing asthma and allergies ^{103,104}. Atopy in the mother seems to be the highest risk factor

^{103,104} and this can contribute to a higher IgE level in the newborn ¹⁰⁵. However, no relation between family atopy and level of IgE level has been reported ¹⁰³. Chang et al. revealed that several genes are related to an increase of IgE production for diseases such as IPEX, OS and WAS syndrome ¹⁰⁶. This could be an explanation of increased IgE in newborns in cases besides atopy. Levels of IgE vary in cases of CDS (>1000 IU/ml) ⁷⁹, NS (982-15302 IU/ml) ^{83,95}, WAS ¹⁰⁶, atopic dermatitis (0-1000 IU/ml) ^{83,95}, OS (0-45000 IU/ml) ^{83,95}, and ichthyosis. IgA can be reduced in NS ⁹⁸ or selective IgA deficiency ¹⁰². IgG levels can be reduced in cases of immunodeficiencies or NS but can also be normal due to maternal IgG ⁹⁸. Although not considered as a routine investigation, elevation of activated IL17/IL-22 is mainly seen in ichthyosis ¹⁰⁷. Additional tests are also recommended in cases of ichthyosis combined with alopecia and neurological signs.

A blood smear is strongly advised when syndromic ichthyosis is suspected. Vacuolated leucocytes called lipid droplets (Jordan's anomaly) are mainly but not only found in CDS ^{6,82,108,109}. However, the severity of the disease is not related to the presence of lipid droplets ¹⁰⁸. When present, investigation of other organ systems, such as a liver ultrasound is recommended ⁸².

Skin biopsies

Histology of skin biopsies in NE is strongly recommended in several studies ^{6,67,97,110}. A biopsy can confirm the diagnosis in ~40 % of cases ^{3,4,7}. Especially high specificity and sensitivity is reported in NS and PIDs, of which in NS due to the sensitive staining of Lympho-Epithelial Kazal-Type related inhibitor (LEKTI) which is absent in NS ^{6,83,110}. LEKTI staining is recommended particularly in psoriasiform epidermal hyperplasia to rule out NS ¹¹¹, but in rare cases can also differentiate from desmosomal disorders such as Severe dermatitis, Atopic diatheses and Metabolic (SAM) syndrome, that can resemble NS ⁶². In NS, different histology patterns are seen, based on different phases within the spectrum ⁶⁷. In PID/OS specific features are observed in the majority of cases ^{4,67}. The diagnosis of PID is made based on a spongiotic reactions pattern with keratinocytic necrosis, satellite cell lymphocytes and infiltrates of lymphocytes with or without eosinophils ^{4,110}. A biopsy is determinative in OS to differentiate with SCID and maternal GVHD ¹, however publications exist revealing no histological difference between OS and GVHD ¹¹⁰. In ichthyoses, a biopsy is helpful in ~50 % of cases ⁴. Skin biopsies were taken in cases of psoriasis

(2/2), OS (9/24), NS (7/14), GvHD (2/3), DCM (1/1), AEC (3/4), non-syndromic ichthyosis (4/10), syndromic ichthyosis (1/2), metabolic disorder (1/3) and other (1/4). Besides classical H&E staining, electron microscopy examination may be helpful, e.g. in NS²⁸. Ultrastructural examination is not frequently performed nowadays. Skin histology is also helpful in SSSS⁶ and EI^{1,6}. In bullous skin diseases, EI can be differentiated from SSSS and hereditary epidermolysis bullosa (EB)¹. Also, in cases of skin detachment, to determine the level of detachment, immunofluorescence on skin biopsies is most valuable on narrowing the diagnosis. The recommended number of biopsies range from 2¹¹⁰ to 3⁹⁷ although original literature herein refers to obtain multiple biopsies in adult erythroderma, in which diagnosis confirmation could better be determined compared to a single biopsy¹¹².

When a punch biopsy is not feasible or permitted, an alternative approach is described to differentiate between EI, toxic epidermal necrolysis (TEN) and SSSS: the 'jelly roll' frozen technique was described and proposed for cases of vesiculo-bullous diseases of the newborn, wherein sloughed skin is wrapped around a cotton tipped applicator and subjected to frozen section analysis¹¹³.

Hair analysis

Hair abnormalities are known in genetic disorders, such as NS, Menkes disease, TTD, uncombable hair syndrome and loose anagen hair syndrome. NS, Menkes disease and TTD are herein associated with NE. Hairs can be investigated through dermoscopy, reflectance confocal microscopy, optical microscopy and electron microscopy¹¹⁴.

In the published cases, hair analysis was limited to NS, Menkes disease and TTD, which showed characteristic features such as trichorrhexis invaginata, pili torti, and trichorrhexis nodosa. In NS, also samples of pili torti and trichorrhexis nodosa were found. Hairs of scalp, eyebrows or eyelashes seems suitable for investigation⁸³. One study advises to cut the hairs instead of plucking them^{83,115}. In TTD, hair shaft abnormalities will be profoundly seen in area of repeated trauma such as the occipital area¹¹⁵. In NS, hair from eyelashes are easier to investigate than from the scalp¹¹⁶. Trichorrhexis invaginata (bamboo hair) is specific for NS^{11,117}. Trichorrhexis

nodosa seems nonspecific, while seen in ectodermal dysplasia, TTD, NS and Menkes disease^{83,115,118}. In Menkes disease, due to mutations in the copper transporting ATPase, all the copper enzymes are defective and the cross-linking of collagen, elastin and keratin is impaired. Macroscopically, the hair is sparse, fine, slow growing, depigmented and, lusterless with a peculiar steely consistency. On microscopic examination, pili torti or kinky hair is observed^{43,117,118} but this can also be found in NS^{79,83}. Trichoschisis, characterized by linear fracture of the hair shaft, given it the appearance of a 'tiger tail' is specific for TTD under polarized light microscopy^{117,118}. Although not seen in the current literature case series, the majority of patients with Keratosis-Ichthyosis-Deafness (KID) syndrome suffer from alopecia due to hair deformities¹¹⁹. In a study on trichoscopy in erythroderma, hair deformities were found in 41% (mainly in NS), 31% in cases with neurologic impairment and in 33% of cases with immunological defects¹¹⁹. Hair abnormalities are not always present at the onset of NE, but many details are unknown. In cases of NS, trichorrhexis invaginata was found after an average of 10 months⁴ with a range between 7 months³ to several years⁷⁹. Therefore, repeated hair samples may be required to confirm the diagnosis.

Molecular genetic analysis

Genetic mutation analysis is available for almost the complete differential spectrum of NE, but features prominently in diagnosing primary immunodeficiencies, metabolic disorders, and all types of ichthyoses (syndromic and non-syndromic). In ichthyoses, 13 genes are currently associated with ARCI: *ABCA12*, *ALOX12B*, *ALOXE3*, *CASP14*, *CERS3*, *CYP4F22*, *LIPN*, *NIPAL4*, *PNPLA1*, *SDR9C7*, *SLC27A4*, and *TGM1*¹. However, in not all patients a known mutation is found⁶. *TGM1* mutations was most frequently (30-75%) found in ARCI patients, but varied due to geographical and cultural origin^{80,120-122}. A correlation between phenotype and genotype variations has been described in *SPINK5*, associated with NS^{3,98}.

Genetic analysis was performed in 39/74 cases and found positive in 30/74 (41%) cases ; in OS (16/24; 67%), NS (4/14; 29%), AEC (3/4; 75%), HI (2/4; 50%), EI (2/2; 100%), and non-EI (3/4; 75%). In cases of OS, mutations were found in *RAG1* (14/16; 88%), *RAG2* and *Artemis*. Mutation analysis was also diagnostic in single cases of TTD, IPEX, Menkes disease, KID, Holocarboxylase

deficiency and Kindler Epidermolysis Bullosa (EB). Remarkably, in a case of HI, DNA was extracted from hairs ¹⁴. No mutation was found in cases of SSSS, DCM and CDS.

Recently in a prospective study, in 70% of patients with NE, a mutation could be detected by Next Generation Sequencing (NGS), with a selected gene panel of 60 genes ¹²³, that will be adjusted according to this review (**Supplementary S7**). Based on the diagnostic delay in cases of NS, OS, IPEX and non-syndromic ichthyosis in this review, one can assume that performing mutation analysis in an early phase is important to limit complications. Although in most cases in this review genetic analysis was performed on blood samples, collecting material via non-invasive methods are important to consider as a future alternative in patients with NE. Collecting saliva in neonates with buccal swabs for DNA and RNA sampling seem very promising, but different techniques herein determine optimal outcome ¹²⁴.

Imaging investigations

Several imaging investigations are described as useful for the diagnosis in NE, especially in PIDs related to NE ¹⁰². In X-linked agammaglobulinemia, chest X-rays shows sparse lymphoid tissue (tonsillar and adenoidal), while in Common Variable Immunodeficiency (CVID), bronchiectasis, bronchial wall thickness and atelectasis are seen ^{125,126}. In CVID, a magnetic resonance imaging (MRI) of the central nervous system can display diffuse leptomeningeal thickness and enlargement with cerebral atrophy and abscesses ¹²⁵. In SCID and DiGeorge syndrome (DGS), chest X-ray can show a narrow upper mediastinal contour and retrosternal lucency, due to the absence of thymus ^{125,127}. In SCID, DGS and WAS recurrent pneumonias can be seen ¹²⁸. As is shown in **Supplemental S5**, skeletal deformities can be visualized with X-rays in SLS, Conradi-Hünermann-Happle syndrome (CHH) and DGS. Echocardiography can be performed when suspicion arises for DGS, SLS or KID. In our cases found, investigations such as X-rays (NS, Menkes disease, DCM), ultrasonography (AEC), EEG (Menkes disease) and MRI (DCM) were performed, though in the majority did not lead to the diagnosis. Considering that imaging can be useful in typical cases, imaging is predominantly performed after the neonatal period.

Assessment of diagnostic approach

A multidisciplinary approach is highly recommended by previous publications wherein an alternative approach in patients with NE was reported ^{1,6,9-11,90,94}. According to this scoping review, many aspects of diagnostics contribute in finding a highly suggestive or definite diagnosis in patients with NE. A multidisciplinary 6-step diagnostic approach is proposed (**Fig. 2**).

Step 1. A combined approach of dermatologists and pediatricians is recommended with a complete medical history (pregnancy, complications and miscarriages, recent medication use, consanguinity, family history of PID, ichthyosis, atopy and psoriasis) and physical examination with special attention to the presence of collodion membrane, alopecia, blisters, and pustules. The collodion membrane suggests a subtype of ichthyoses. When blisters are present, it is recommended to perform an additional skin biopsy (in addition to step 3) for immunofluorescence microscopy to detect the level of blister formation, and have the possibility to detect absence/reduction of desmosomal proteins. Exclude bacterial or fungal infections such as SSSS or CCC, by taking swabs.

Step 2. In all cases of NE a baseline laboratory blood test should be started for 'NE in general' (**Table 2**). Evaluate findings of step 1 and blood test results to specify a diagnosis.

Step 3. If no diagnosis is found, blood tests should be expanded (**Table 2**) and histology of skin performed (including LEKTI staining) eventually also trichoscopy. A single skin biopsy is sufficient for evaluation by a dermatopathologist. After genetic counseling and consent, whole blood samples (or DNA) can be sent for molecular genetic testing (e.g. Sanger sequencing, targeted NGS panel, WES, WGS) (**Supplementary S7**). Genetic testing in an early phase is recommended.

Step 4. Investigate for extracutaneous, syndromic and/or systemic symptoms. If present, consult a pediatric immunologist, neurologist, cardiologist, ENT specialist or ophthalmologist. The

Accepted Article
combination of neurological signs, hair abnormalities and specific extracutaneous symptoms can narrow down the possible diagnosis towards types of syndromic ichthyosis such as NS. PIDs and metabolic diseases should be excluded, especially in cases with failure to thrive, superimposed infections or lack of response to therapy. On indication further research can be done.

Step 5. When step 4 shows no abnormalities, consider an inherited ichthyosis. Also consider benign inflammatory skin disorders, such as atopic dermatitis, psoriasis and seborrheic dermatitis, which are rare in the neonatal period and when erythrodermic, mainly manifest after three months of age.

Step 6. No recommendations on follow-up are known, but we recommend first check within 1-2 weeks after first clinical evaluation, if possible by a neonatologist or pediatrician and a dermatologist in an academic hospital. Then, a complete physical examination and reevaluation of systemic or extracutaneous symptoms if indicated.

Discussion and conclusions

NE comprises a heterogeneous group of underlying potentially life-threatening diagnoses. This literature review on NE systematically describes the many characteristics based on the medical history, family history, physical characteristics, and additional diagnostic tests that can aid the clinician in narrowing the differential diagnoses. The aid of the ERN-SKIN-subthematic group Ichthyosis, have resulted in an expert opinioned diagnostical approach for practical use.

Additional testing is recommended and helpful in the majority of cases wherein molecular genetics is preferred to start in an early stage of the diagnostic process. However, they are less feasible in cases of (financial) restrictions or lack of (familial) consent, and genetic testing is a time-consuming process in which the results are not always known on a short notice. In those cases, the multidisciplinary diagnostic proposed can be very helpful. Molecular genetics is an evolving area nowadays though, wherein establishing a diagnosis can be done more quickly in time to come. In specific cases, such as bullous characteristics, PIDs and NS, histology of skin biopsies (including LEKTI staining) is a critical element that can easily exclude other causes of NE. Blood tests are needed in NE in general, to reduce and monitor common complications as hypernatremia, dehydration and infections. Specific blood tests can be initiated on indication when metabolic disorders, syndromic ichthyoses or PIDs are suspected and infectious diseases are excluded. In collodion babies the approach with diagnostic tests could be limited because the etiological entities in congenital ichthyoses, wherein metabolic diseases and PIDs are not obvious. Imaging studies seems to have minimal added value in most cases of NE.

The strengths of this review is the systematic literature search, the assistance of a library expert and the expert opinion by the ERN-SKIN group. Limitations are the design of a scoping review, and included cases are prone to publication bias. Future recommendations in the approach of NE include a high sensitivity of skin biopsies, short time delay of molecular genetics, and an ongoing multidisciplinary approach in these rare cases. In the Netherlands based on the literature a NGS NE panel has been developed that is available internationally.

In conclusion, this scoping review with a systematic literature search highlights the characteristics all around NE, and proposes a systematic diagnostic approach for all patients with NE, with help from expert opinion of the ERN-SKIN group-subthematic Ichthyosis.

Acknowledgements

No conflicts of interest. This study is part of the Academic Centers of Excellence of Congenital Anatomical Abnormalities and Primary Immunodeficiency Center of the Erasmus MC University Medical Center-Sophia Children's Hospital and of the European Reference Network-SKIN-Ichthyosis. The (parents of the) patients in this manuscript have given written informed consent to publication of their case details. We thank Wichor Bramer, PhD, information technologist of the Erasmus MC University Medical Center Rotterdam, The Netherlands, for his contribution to the systematic literature search.

REFERENCES

1. Ott H. Guidance for assessment of erythroderma in neonates and infants for the pediatric immunologist. *Pediatr Allergy Immunol* 2019 Jan 31. doi:10.1111/pai.13032. [Epub ahead of print].
2. Cuperus, E, Pasmans SGMA, Sigurdsson, V. The incidence of neonatal erythroderma: results of a survey among all dermatologists in The Netherlands. (2016, unpublished data).
3. Al-Dahlimi, MAA. Neonatal and infantile erythroderma: a clinical and follow-up study of 42 cases. *Journal of Dermatology* 2007;**34**:302-307
4. Pruzskowski A, Bodemer C, Fraitag S, Teillac-Hamel D, Amoric JC, de Prost Y. Neonatal and infantile erythrodermas. A retrospective study of 51 patients. *Arch Dermatol* 2000;**136**:875-880.
5. Sarkar R, Sharma RC, Koranne RV, Sardana K. Erythroderma in children: a clinico-etiological study. *J Dermatol* 1999 Aug;**26**(8):507-11.
6. Fraitag S, Bodemer C. Neonatal Erythroderma. *Curr opinion in Pediatrics* 2010;**22**:438-44.
7. Ragunatha S, Inamader AC. Neonatal dermatological emergencies. *Indian J Dermatol Venereol Leprol* 2010; **76**:328-40.
8. Ott H, Hoeger PH. Differential diagnosis of neonatal erythroderma. In: *Harper's textbook of pediatric dermatology* (Irvine AD, Hoeger PH, Yan AC, eds), 3rd edn. Wiley-Blackwell Ltd, 2011; 11.1-11.13.
9. Ott H, Hütten M, Baron JM, Merk HF, Folster-Holst R. Neonatal and infantile erythrodermas. *J Dtsch Dermatol Ges* 2008 Dec;**6**(12):1070-85.
10. Dhar S, Banerjee R, Malakar R. Neonatal erythroderma: diagnostic and therapeutic challenges. *Indian J Dermatol* 2012. **57**(6):475-478.
11. Hoeger PH, Harper JL. Neonatal erythroderma: differential diagnosis and management of the 'red baby'. *Arch Dis Child* 1998;**79**:186-191.
12. Yoneda K. Inherited ichthyosis: Syndromic forms. *Journal of Dermatology* 2016;**43**:252-263.
13. Ramphul K, Kota V, Mejias SG. Child syndrome. Statpearls [Internet] 2019 Jan.
14. Burns PB, Rohroch RJ, Chung KC. The Levels of Evidence and their role in Evidence-Based Medicine. *Plast Reconstr Surg* 2011 Jul;**128**(1):305-310.
15. Takeichi T, Sugiura K, Matsuda K. Novel ABCA12 splice site deletion mutation and ABCA12 mRNA analysis of pulled hair samplex in harlequin ichthyosis. *J Dermatol Science* 2013(**69**):259-265.
16. Tanahashi K, Sugiura K, Sato T, Akiyama M. Noteworthy clinical findings of harlequin ichthyosis: digital autoamputation caused by cutaneous constriction bands in a case with novel ABCA12 mutations. *Br J Dermatol* 2016 (**174**):689-691.
17. Hashemzadeh A, Heydarian F. Harlequin ichthyosis. *Acta Medica Iranica* 2009 (**47**):81-82.

18. Long MC. Ichthyosis with confetti: a rare diagnosis and treatment plan. *BMJ Case Rep* 2014 Jul 10;1-4.
19. Zvulunov A. Life-threatening cutaneous conditions in neonates. *Clinics in Dermatology* 2005 (23);134-143.
20. Claus S, Terliesner N, Simon JC, Treudler R. Congenital erythroderma. *J Dtsch Dermatol Ges* 2016;435-437.
21. Rubio-Gomez GA, Weinstein M, Pope E. Development of a disease severity score for newborns with collodion membrane. *J Am Acad Dermatol* 2013;70(13):506-511.
22. Scheimberg I, Hoeger PH, Harper JI, Lake B, Malone M. Omenn's syndrome: differential diagnosis in infants with erythroderma and immunodeficiency. *Pediatric and Developmental Pathology* 2001 (4);237-245.
23. Ansai S, Mitsuhashi Y, Sasai K. Netherton's syndrome in siblings. *Br J Dermatol* 1999;141:1097-1100
24. Chao SC, Richard G, Lee JYY. Netherton syndrome: report of two Taiwanese siblings with staphylococcal scalded skinsyndrome and mutation of SPINK5. *Br J Dermatol* 2005;152:159-165.
25. Okulu E, Tunc G, Erdeve O et al. Netherton syndrome: a neonatal case with respiratory insufficiency. *Arch Argent Pediatr* 2018;116(4):e609-e611.
26. Itoh K, Kako T, Suzuki N, Sakurai N, Sugiyama K, Yamanishi K. Severe lethal phenotype of a Japanese case of Netherton with homozygous founder mutations of SPINK5 c.375_376delAT. *J Dermatology* 2015;1212-1214.
27. Mizuno Y, Suga Y, Haruna K, et al. A case of a Japanese neonate with congenital ichthyosiform erythroderma diagnosed as Netherton syndrome. *Clinical and Experimental Dermatology* 2006;31:677-680.
28. Müller FB, Hausser I, Berg D, et al. Genetic analysis of a severe case of Netherton syndrome and application for prenatal testing. *Br J Dermatol* 2002;146:495-499.
29. Shwayder T, Banerjee S. Netherton syndrome presenting as congenital psoriasis. *Pediatric Dermatology* 1997;14(6);473-476.
30. Lo YP, Snehal D, Shih CJ, Wu PY. Erythroderma and bamboo hair at birth: a case of Netherton syndrome and literature review. *Dermatologica Sinica* 2018;36:159-160.
31. El Khoury RA, Maalouf EH, Kechichian E, Tomb R. Steroid-resistant erythroderma and alopecia in newborn. *Indian Journal of Dermatology* 2018;84(3):304.
32. Mendiratta V, Yadav P, Chander R, Aggarwal S. Recurrent pustular eruption masquerading as pustular psoriasis in Netherton syndrome. *Pediatric Dermatology* 2014;32(1):147-157.
33. Magnani C, Bertolini P, Tondelli T, Bassissi GIP, Ricci R, Bevilacqua G. Early skeletal signs in Netherton syndrome. *Pediatric Dermatology* 2006;23(6):590-591.
34. Aksu G, Ucar SK, Bulut Y, et al. Renal involvement as a rare complication of Dorfman-Chanarin Syndrome: a case report. *Pediatric Dermatology* 2008;25(3):326-331.

- Accepted Article
35. Kayahashi K, Mizumoto Y, Myojo S, Mitani Y, Tajima A, Fujiwara H. A successful case of neoadjuvant chemotherapy and radical hysterectomy during pregnancy for advanced uterine cervical cancer accompanied by neonatal erythroderma. *J Obstet Gynaecol Res* 2018;44(10):2003-2007.
 36. Cremers CWRJ, Philipsen VMJG, Mali JWH. Deafness, ichthyosiform erythroderma, corneal involvement, photophobia and dental dysplasia. *J Laryng* 1977;91: 585-589.
 37. Vilas Boas P, Sanchez-Herrero A, Suárez-Fernández R, Campos-Dominguez M. Neonatal ichthyosis and hypotrichosis. *Pediatric Dermatology* 2019;36:e77-e78.
 38. Naiki M, Mizuno S, Yamada K, et al. MBTPS2 mutation causes BRESEK/BRESHECK syndrome. *Am J Med Genet* 2012;158A: 97-102.
 39. Zhang Z, Cheng R, Liang J, et al. Ankyloblepharon-ectodermal dysplasia-clefting syndrome misdiagnosed as epidermolysis bullosa and congenital ichthyosiform erythroderma: case report and review of published work. *Journal of Dermatology* 2019;46:422-425.
 40. Yoo J, Berk DR, Fabre E, Lind AC, Mallory SB. Ankyloblepharon-ectodermal dysplasia-clefting (AEC) syndrome with neonatal erythroderma: report of two cases. *International Journal of Dermatology* 2007;46:1196-1197.
 41. Berk DR, Crone K, Bayliss SJ. AEC syndrome caused by a novel P63 mutation and demonstrating erythroderma followed by extensive depigmentation. *Pediatric Dermatology* 2009;26(5):617-618.
 42. Zhang G, Chen J, Yan L, X. Image gallery: rapidly spontaneous onset of erythroderma in a neonate. *British Journal of Dermatology* 2018;178:142.
 43. Galve J, Vicente A, González-Enseñat MA, et al. Neonatal erythroderma as a first manifestation of Menkes disease. *Pediatrics* 2012;130:e239-e242.
 44. Fertitta L, Welfringer-Morin A, Rigourd V, et al. Neonatal staphylococcal scalded skin syndrome in a breastfed neonate. *J Eur Acad Dermatol Venereol* 2020;34:e36-e38.
 45. Gupta A, Jacobs N. Visual diagnosis: 2-week-old has a red, peeling rash. *Pediatrics in review* 2013;34:e9-e12.
 46. Satyapal S, Mehta J, Dhurat R, Jerajani H, Vaidya M. Staphylococcal scalded skin syndrome. *Indian Journal of Pediatrics* 2002;69:899-901.
 47. Boull CL, Hook KP. Neonatal erythroderma-clinical perspective. *Research and Reports in Neonatology* 2017;7:1-9.
 48. Greenberg-Kushnir N, Lee YN, Simon AJ, et al. A large cohort of RAG1/2-deficient SCID patients-clinical, immunological, and prognostic analysis. *Journal of Clinical Immunology* 2020;40(1):211-222.
 49. Sharapova SO, Guryanova IE, Pashchenko OE, et al. Molecular characteristics, clinical and immunologic manifestations of 11 children with Omenn syndrome in East Slavs (Russia, Belarus, Ukraine). *Journal of Clinical Immunology* 2016;36(1):46-55.
 50. Meshaal SS, El Hawary RE, Abd Elaziz DS, et al. Phenotypical heterogeneity in RAG-deficient patients from a highly consanguineous population. *Clinical and experimental immunology* 2019;195(2):202-211.

51. Faletra F, Bruno I, Berti I, Pastore S, Pirrone A, Tommasini A. A red baby should not be taken too lightly. *Acta Paediatrica, International Journal of Pediatrics* 2012;101(12):e573-577.
52. Katugampola RP, Morgan G, Khetan R, Williams N, Blackford S. Omenn's syndrome: lessons from a red baby. *Clinical and experimental Dermatology* 2008;33(4):425-428.
53. Tallar M, Routes J. Omenn syndrome identified by newborn screening. *Clinics in perinatology* 2020;47(1):77-86.
54. Cotter CL, Rivers E, Salisbury J, Duarte Williamson E, Tewari A. Neonatal erythroderma. *Clinical and experimental dermatology* 2020;45:646-649.
55. Cuperus E, van Montfrans JM, van Gijn ME, et al. Congenital erythroderma should be considered as an urgent warning sign of immunodeficiency: a case of Omenn syndrome. *Eur J Dermatol* 2017 Jun 1;27(3):313-314.
56. Zafar R, Ver Heul A, Beigelman A, et al. Omenn syndrome presenting with striking erythroderma and extreme lymphocytosis in a newborn. *Pediatric Dermatology* 2017;34(1):e37-e39
57. Mansur Tatli MM, Sarraoglu S, Shermatov K, Salih Gurel M, Karadag A. Exfoliative erythroderma, recurrent infections, generalized lymphadenopathy and hepatosplenomegaly in a newborn: Omenn syndrome. *Australasian Journal of Dermatology* 2007;48(2):133-134.
58. Dyke MP, Marlow N, Berry PJ. Omenn's disease. *Archives of disease in Childhood* 1991;66(10):1247-1248.
59. Jaouad IC, Ouldim K, Ali Ou Alla S, Kriouile Y, Villa A, Sefiani A. Omenn syndrome with mutation in RAG1 gene. *Indian Journal of Pediatrics* 2008;74(9):944-946.
60. Flidel O, Barak Y, Lipschitz-Mercer B, Frumkin A, Mogilner BM. Graft versus Host disease in extremely low birth weight neonate. *Pediatrics* 1992;89(4):689-690
61. Ozdoğan T, Metin F, Doğu A, Timur C, Yildiz E. Transfusion-associated graft-versus-host disease in a newborn. *The Journal of Maternal-Fetal & Neonatal Medicine* 2007;20(3):271-272.
62. Samuelov L, Sarig O, Harmon RM, et al. Desmoglein 1 deficiency results in severe dermatitis, multiple allergies and metabolic wasting. *Nat Genet* 2013 October;45(10):1244-1248.
63. Vakkilainen S, Puhakka L, Klemetti P, et al. Novel DSP Spectrin 6 Region Variant Causes Neonatal Erythroderma, Failure to Thrive, Severe Herpes Simplex Infections and Brain Lesions. *Derm Venereol* 2019 Jul 1;99(9):789-796.
64. Eblan MJ, Goker-Alpan O, Sidransky E. Perinatal lethal Gaucher disease: a distinct phenotype along the neuronopathic continuum. *Fetal and Pediatric Pathology* 2005;24(4-5):205-222.
65. Stone DL, Carey WF, Christodoulou J, et al. Type 2 Gaucher disease: the collodion baby phenotype revisited. *Arch Dis Child Fetal Neonatal Ed* 2000;82:F163-F166.
66. Gniadecki R. The Skin and disorders of the haematopoietic and immune systemis. In: *Rooks's textbook of Dermatology* (Griffiths C, Barker J, Bleiker T, Chalmers R, Creamer D, eds), Volume 4, 9th edn. Oxford: Wiley Blackwell,2016:148.1-148.19.

67. Sillevs Smitt JH, Kuijpers TW. Cutaneous manifestations of primary immunodeficiency. *Curr Opin Pediatr* 2013;**25**(4):492-497.
68. Kucukguclu S, Tuncok Y, Ozkan H, Guven H, Uguz A, Maltepe F. Multiple-dose activated charcoal in an accidental vancomycin overdose. *J Toxicol Clin Toxicol* 1996;**34**(1):83-86.
69. Yigit S, Korkmaz A, Sekerel B. Drug-induced hypersensitivity syndrome in a premature infant. *Pediatric Dermatology* 2005;**22**(1):71- Bacteriological, pharmacological and clinical comparison between amoxycillin and ceftriaxone in the treatment of 300 purulent meningitis 74.
70. Cadoz M, Denis F, Guerma T, Prince-David M, Diop Mar I. Bacteriological, pharmacological and clinical comparison between amoxycillin and ceftriaxone in the treatment of 300 purulent meningitis. *Pathol Biol (Paris)* 1982;**30**:522-5.
71. Chang SE, Choi JH, Koh JK. Congenital erythrodermic psoriasis. *British Journal of Dermatology* 1999;**140**:538-539.
72. Parimalam K, Thomas J. Congenital erythrodermic psoriasis with atopic dermatitis: an example of immunogenetic spinoff. *Indian Journal of Pathology and Microbiology* 2013;**56**(1):72.
73. Koga H, Kokubo T, Akaishi M, Iida K, Korematsu S. Neonatal onset diffuse cutaneous mastocytosis: a case report and review of the literature. *Pediatric Dermatology* 2011 vol.28;**5**:542-546
74. Suzumura H, Nitta A, Arisaka O. Cerebro-oculo-facio-skeletal syndrome complicated by congenital ichthyosis. *Clinical Dysmorphology* 2006;**15**(1): 39-40.
75. Fassihi H, Wessagowit V, Jones C, et al. Neonatal diagnosis of Kindler syndrome. *Journal of Dermatological Science* 2005;**39**:183-185.
76. Aguilera BA, González SR. High prolactin levels in a newborn with erythroderma. *The Pediatric Infectious Disease Journal* 2016;**35**(5):593-594.
77. Haim A, Grunwald MH, Kapelushnik K, Moser AM, Beigelman A, Reuveni H. Hypereosinophilia in red scaly infants with scabies. *J Pediatr* 2005;**146**:712.
78. Inamadar AD, Palit A. Acrodermatitis enteropathica-like eruptions: many faces, one expression. In: *Advances in Pediatric Dermatology* (Inamadar AC, Palit A, eds), New Delhi: Jaypee Brothers Medical Publishers; 2011:234-48.
79. Van Gysel D, Koning H, Baert MRM, Savelkoul HF, Neijens HJ, Oranje AP. Clinico-immunological heterogeneity in Comèl-Netherton syndrome. *Dermatology* 2001;**202**(2):99-107.
80. El-Sayed N, Seifeldin NS, Gobrial CKT. *Postepy Dermatol Alergol* 2018 Apr;**35**(2):161-166.
81. Saral S, Vural A, Wollenberg A, Ruzicka T. A practical approach to ichthyoses with systemic manifestations. *Clin Genet* 2017;**91**:799-812.
82. Mogahed EA, El-Hennawy A. El-Sayed R, El-Karakasy H. Chanarin-Dorfman syndrome: a case report and review of the literature. *Arab J Gastroenterol* 2015 Sep-Dec;**16**(3-4)142-4.

83. Sun JD, Linden KG. Netherton syndrome: a case report and review of the literature. *Int Journal of Dermatology* 2006;**45**:693-697.
84. Smith DL, Smith JG, Wong SW, deShazo RD. Netherton's syndrome. a syndrome of elevated IgE and characteristic skin and hair findings. *J Allergy Clin Immunol* 1995; **95** (1 Part 1): 116–123.
85. Van Gysel GD, Lijnen RL, Moekti SS, de Laat PC, Oranje AP. Collodion baby: a follow-up study of 17 cases. *J Eur Acad Dermatol Venereol* 2002 Sep;**16**(5):472-5.
86. Oji V, Tadini G, Akiyama M, et al. Revised nomenclature and classification of inherited ichthyoses: results of the first ichthyosis consensus conference in Soreze 2009. *J Am Acad Dermatol* 2010;**63**:607-41.
87. Larrègue M, Ottavy N, Bressieux JM, Lorette J. Collodion baby: 32 new case reports. *Ann Dermatol Venereol*. 1986;**113**(9):773-85.
88. Prado R, Ellis LZ, Gamble R, Funk T, Alan Arbuckle H, Bruckner AL. Collodion baby: an update with a focus on practical management. *J Am Acad Dermatol* 2012;**67**:1362-74.
89. Schmuth M, Martinz V, Janecke AR, et al. Inherited ichthyoses/generalized Mendelian disorders of cornification. *Eur J Hum Genetics* 2013 (**21**):123-133.
90. Oji V, Preil ML, Kleinow B, et al. S1 Guidelines for the diagnosis and treatment if ichthyoses – update. *J Dtsch Dermatol Ges* 2017 Oct;**15**(10):1053-1065.
91. Cuperus E, Bolling MC, de Graaf M, et al. Collodion babies: a 15-year retrospective multicenter study in the Netherlands. Evaluation of severity scores to predict the underlying disease. *J Am Acad Dermatol* 2021 Apr;**84**(4):1111-1113.
92. Leung AKC, Barankin B, Leong KF. Staphylococcal-scalded skin syndrome: evaluation, diagnosis, and management. *World J Pediatr* 2018 Apr;**14**(2):116-120.
93. Bruno C, Bertini E, Di Rocco M, et al. Clinical and genetic characterization of Chanarin-Dorfman syndrome. *Biochemical and Biophysical Communications* 2008;**369**(4):1125-1128.
94. Inamadar AC, Ragunatha S. The rash that becomes an erythroderma. *Clinics in Dermatology* 2019;**37**:88-98.
95. Saleem HMK, Shadid MF, Shahbaz A, Sohail A, Arslan Shadid M, Sachmechi I. Netherton syndrome: a case report and review of the literature. *Cureus* 2018;**10**(7):e3070.
96. Caceres-Rios H, Tamayo-Sanchez K, Duran-Mckinster C, de la Luz Orozco M, Ruiz-Maldonado R. Keratitis, ichthyosis, and deafness (KID syndrome): review of the literature and proposal of a new terminology. *Pediatric Dermatology* 1996;**13**(2):105-113
97. Sarkar R, Garg VK. Erythroderma in children. *Indian J Dermatol Venereol Leprol* 2010;**76**:341-7. Sarkar R, Garg VK. Erythroderma in children. *Indian J Dermatol Venereol Leprol* 2010;**76**:341-7.
98. Hannula-Jouppi K, Laasanen SL, Ilander M, et al. Intrafamily and interfamilial phenotype variation and immature immunity in patients with Netherton syndrome and Finnish SPINK5 founder mutation. *JAMA Dermatol* 2016;**152**(4):435-442.

99. El-Sayed Z, Radwan N. Newborn screening for primary immunodeficiencies: the gaps, challenges, and outlook for developing countries. *Front. Immunol.* 10.2987.doi: 10.3389/fimmu.2019.02987.
100. Jiang T, Li Z, Zhang Q. Advances in neonatal screening for primary immune deficiencies. *Exp Ther Med* 2016;**11**:1542-44.
101. Brockow K, Akin C, Huber M, Metcalfe DD. Assessment of the extent of cutaneous involvement in children and adults with mastocytosis: relationship to symptomatology, tryptase levels, and bone marrow pathology. *J Am Acad Dermatol* 2003;**48**:508–516.
102. Wu EY, Ehrlich L, Handly B, Frush DP, Buckley RH. Clinical and imaging considerations in primary immunodeficiency disorders: an update. *Pediatr. Radiol* 2016 Nov;**46**(12):1630-1644.
103. Koning H, Baert MRM, Oranje AP, Savelkoul HF, Neijens HJ. Development of immune functions related to allergic mechanisms in young children. *Pediatric Research* 1996;**40**:363-375.
104. Mohammadzadeh I, Haghshenas M, Asefi S, Alizadeh-Navaei R. IgE levels in newborn umbilical cord and its relationship with some maternal factors. *Clin Mol Allergy* 2019;**17**(11).
105. Peters JL, Cohen S, Staudenmayer J, Hosen J, Platts-Mills TAE, Wright RJ. Prenatal negative life events increases cord blood IgE: interactions with dust mite allergen and maternal atopy. *Allergy* 2012 Apr;**67**(4):545-51.
106. Chang JC, Kuo HC, Hsu TY, et al. Different genetic associations of the IgE production among fetus, infancy and childhood. *PLoS ONE* 2013;**8**(8): e70362.
107. Czarnowicki T, Helen H, Leonard A et al. The Major orphan forms of ichthyosis are characterized by systemic T-Cell activation and Th-17/Tc-17/Th-22/Tc-22 polarization in blood. *J Invest Dermatol* 2018; **138**(10):2157-2167
108. Gomez-Moyano E, Godoy-Diaz DJ, Ponce-Verdugo L, Sanz-Trelles A, Vera-Casaño A, Sierra-Salinas C. Chanarin-Dorfman syndrome in three siblings in a non-consanguineous family. *J Eur Acad Dermatol Venereol* 2016;**30**(1):157-159.
109. Mitra S, Samanta M, Sarkar M, Chatterjee S. Dorfman-Chanarin syndrom: a rare neutral lipid storage disease. *Indian J Pathol Microbiol* 2010 Oct-Dec;**53**(4):799-801.
110. Leclerc-Mercier S, Bodemer C, Bourdon-Lanoy E, et al. Early skin biopsy is helpful for the diagnosis and management of neonatal and infantile erythrodermas. *J Cutan Pathol* 2010;**37**:249-255
111. Bitoun E, Micheloni A, Lamant L, et al. LEKTI proteolytic processing in human primary keratinocytes, tissue distribution and defective expression in Netherton syndrome. *Human Molecular Genetics* 2003;**12**(19):2417-2430.
112. Walsh NM, Prokopetz R, Tron VA, et al. Histopathology in erythroderma: review of a series of cases by multiple observers. *J Cutan Pathol* 1994;**21**:419–23.
113. Galler B, Bowen C, Arnold J, Kobayashi T, Dalton SR. Use of frozen section ‘jelly-roll’ technique to aid in the diagnosis of bullous congenital ichthyosiform erythroderma (epidermolytic hyperkeratosis). *J Cutan Pathol* 2016;**43**:434-437.
114. Chen L, Yang Y, Tian X, et al. Dermatoscopy of the hair compared to three alternatives for the diagnosis of pediatric Netherton syndrome. *J Dermatol* 2020 May;**47**(5):e195-e196.
115. Itin PH, Fistarol SK. Hair shaft abnormalities – clues to diagnosis and treatment. *Dermatology* 2005;**211**:63-71.

116. Powell J, Dawber RPR, Ferguson DJP, Griffiths WAD. Netherton's syndrome: Increased likelihood of diagnosis by examining eyebrow hairs. *Br J Dermatol* 1999;**141**: 544–546.
117. Silengo M, Valenzise M, Sorasio L, Ferrero GB. Hair as a diagnostic tool in dysmorphology. *Clin Genet* 2002;**62**:270-272.
118. Smith VV, Anderson G, Malone M, Sebire NJ. Light microscopic examination of scalp hair samples as an aid in the diagnosis of paediatric disorders: retrospective review of more than 300 cases from a single centre. *J Clin Pathol* 2005;**58**:1294-1298.
119. Itin P. KID syndrome. In: *Pediatric Dermatology* (Schachner LA, Hansen RC, eds.), Edinburgh, Mosby, 2003, 416–418.
120. Israeli S, Goldberg I, Fuchs-Telem D, et al. Non-syndromic autosomal recessive congenital ichthyosis in the Israeli population. *Clinical and Experimental Dermatology* 2013;**28**:911-916.
121. Rodriguez-Pazos L, Fachal GL, Toribio J, Carracedo A, Vega A. Analysis of TGM1, ALOX12B, ALOXE3, NIPAL4 and CYP4F22 in autosomal recessive congenital ichthyosis from Galicia (NW Spain): evidence of founder effects. *Br J Dermatol* 2011;**165**:906-911.
122. Youssefian L, Vahidnezhad H, Saeidian AH, et al. Autosomal recessive congenital ichthyosis: genomic landscape and phenotypic spectrum in a cohort of 125 consanguineous families. *Human Mutation* 2019;**40**:288-298.
123. Cuperus E, Sigurdsson V, van den Akker PC, Bolling MC, van Gijn ME, Pasmans SGMA. Diagnostic next generation sequencing in neonatal erythroderma. *J Dtsch Dermatol Ges* 2021;**19**(4):612-614.
124. Yen E, Kaneko-Tarui T, Maron JL. Technical Considerations and Protocol Optimization for Neonatal Salivary Biomarker Discovery and Analysis. *Front Pediatr* 2021. 8:618553. doi: 10.3389/fped.2020.618553
125. Yin EZ, Frush DP, Donnelly LA, Buckley RH. Primary immunodeficiency disorders in pediatric patients: clinical features and imaging findings. *Am J Roentgenol* 2001;**176**:1541–1552
126. Curtin JJ, Webster AD, Farrant J, Katz D. Bronchiectasis in hypogammaglobulinaemia - a computed tomography assessment. *Clin Radiol* 1991;**44**:82–84.
127. Hedlund GL, Griscom NT. Respiratory system. In: *Practical pediatric imaging* (Kirks DR, eds), Cleveland, Philadelphia: Lippincott-Raven;1998; 756-757
128. Kuhn JP, Slovis TL, Silverman FN, Kuhns, LR. The neck and respiratory system. In: *Caffey's pediatric x-ray diagnosis* (Silverman FN, Kuhn, JP, eds), 9th edn. CV Mosby, St. Louis, 1993; 563-566.

ABBREVIATIONS

AD autosomal dominant

AR autosomal recessive

AEC ankyloblepharon-ectodermal cleft-lip/palate

ARCI autosomal recessive congenital ichthyosis

ATP adenosine triphosphate

CCC congenital cutaneous candidiasis

CDS Chanarin-Dorfman syndrome

CHH Conradi-Hünemann-Happle syndrome

CHILD congenital hemidysplasia with ichthyosiform erythroderma and limb defects

CIE congenital ichthyosiform erythroderma

COFS cerebro-oculo-facio-skeletal syndrome

CRP C-reactive protein

CVID common variable immunodeficiency

DCM diffuse cutaneous mastocytosis

DGS DiGeorge syndrome

DIHS drug induced hypersensitivity syndrome

EB epidermolysis bullosa

EI epidermolytic ichthyosis

ENT ear-nose-throat

ERN European Reference Network

ESR erythrocyte sedimentation rate

FTT failure to thrive

GVHD graft versus host disease

HI Harlequin ichthyosis

HIES hyper IgE syndrome

IF Immunofluorescence

IgA/-E/-G immunoglobulin A/-E/-G

IL interleukin

IPEX Immunodysregulation polyendocrinopathy enteropathy X-linked

IPS ichthyosis prematurity syndrome

IWC ichthyosis with confetti

KID keratitis ichthyosis deafness

KIDAR keratitis ichthyosis deafness, autosomal recessive

KREC kappa deleting-recombination excision circles

LEKTI lympho-epithelial Kazal-type related inhibitor

LI Lamellar ichthyosis

MRI magnetic resonance imaging

NDA no data available

NE neonatal erythroderma

NGS next generation sequencing

NMF no mutation found

NOS Not other specified

NS Netherton syndrome

OS Omenn syndrome

PCR polymerase chain reaction

PID primary immunodeficiency

SAM severe dermatitis, atopic diathesis and metabolic syndrome

SCID severe combined immunodeficiency

SHCB self-healing collodion baby

SLS Sjögren-Larsson syndrome

SSSS staphylococcal scalded skin syndrome

TEN toxic epidermolytic necrolysis

TREC T-cell receptor excision circles

TTD trichothiodystrophy

WAS Wiskott-Aldrich syndrome

XLI X-linked ichthyosis

Legend Tables and figures

Figure 1. Clinical pictures of patients with neonatal erythroderma

Supplementary S1; EMBASE search terms

Supplementary S2. Flowchart literature review of neonatal erythroderma

Supplementary S3 Characteristics, age of onset and diagnosis delay in 74 patients

Table 1. Overview of differential diagnoses in neonatal erythroderma

Supplementary S4. Alopecia, extracutaneous, systemic symptoms and mortality in 74 patients

Supplementary S5. Overview of syndromic and extracutaneous symptoms in neonatal erythroderma

Table 2. Laboratory tests performed in patients with neonatal erythroderma

Supplementary S6. Laboratory results and diagnostics performed in 74 patients with neonatal erythroderma

Supplementary S7. Suggestion NGS panel neonatal erythroderma

Figure 2. A 6-step-approach of neonatal erythroderma

Table 1. Overview of differential diagnoses in neonatal erythroderma

NON-SYNDROMAL ICHTHYOSIS	Reference(s)	IMMUNODEFICIENCIES	Reference(s)
- ARCI (including lamellar ichthyosis ©, congenital ichthyosiform erythroderma ©, Harlequin ichthyosis ©), ichthyosis with confetti	3,4,15-18	- Omenn syndrome	4,22,48-59
- Epidermolytic ichthyosis © (including ichthyosis bullosa of Siemens) *	1,6,9,11,19	- SCID	
- Ichthyosis prematurity syndrome ©	20	- Wiskott-Aldrich syndrome (WAS) *	3,4
- Peeling skin syndrome type B *	1	- Immunodysregulation, polyendocrinopathy, and enteropathy. X-linked, syndrome (IPEX) *	1,51
- Self-healing collodion * ©	21	- Maternal graft-versus-host-disease	4,22,60,61
- X-linked recessive ichthyosis * ©	21	- Severe dermatitis, multiple allergies, and metabolic wasting syndrome (SAM), SAM-like phenotype *	62,63
SYNDROMAL ICHTHYOSIS		- Di George Syndrome *	1
- Netherton syndrome ©	3,4,22-33	- Selective IgA deficiency *	4
- Sjögren-Larsson syndrome ©	4	- Gaucher Syndrome type 2 ©	64,65
- Chanarin-Dorfman syndrome	34	- AD/AR- Hyper IgE syndrome*	66,67
- Conradi-Hünermann-Happle syndrome * ©	11,19	- X-linked agammaglobulinemia*	66
- Keratitis-ichthyosis-deafness syndrome (KID), KID-AR, and ichthyosis hystrix of Curth-Macklin ©	4,12,35,36	- CVID*	66
- Trichothiodystrophy ©	37	DRUGS	
- IFAP syndrome *	38	- Stevens-Johnson syndrome *	8
ECTODERMAL DYSPLASIA		- Toxic epidermal necrolysis *	9,19
- Ankyloblepharon-Ectodermal defects-Cleft lip/palate syndrome (AEC)	39-41	- Drug induced hypersensitivity syndrome (vancomycin , phenytoin and ceftriaxon)	68-70
- Toxic shock syndrome *		- Toxic shock syndrome *	11
METABOLIC DISORDERS		OTHER	
- Multiple carboxylase deficiency (Holocarboxylase synthetase deficiency *and biotinidase deficiency *)	1,6,9,11,19,42	- Atopic dermatitis *	19
- Amino Acid disorders (Methylmalonic acidemia, propionic acidemia and maple syrup urine disease) *	8	- Seborrheic dermatitis *	1,9,11,19
- Urea cycle disorders (citrullinemia *)	6	- Psoriasis	71,72
- Menkes disease	43	- Pityriasis rubra pilaris *	1,7,11
INFECTIONS		- Diffuse cutaneous mastocytosis	73
- Staphylococcal scalded-skin syndrome	44-46	- COFS syndrome	74
- Congenital cutaneous candidiasis	47	- Kindler EB	75
		- After cow milk consumption	76
		- Scabies	77
		- Hemophagocytic lymphohistiocytosis *	19

		- Congenital lues *	19
		- Acrodermatitis enteropathica*	78

Abbreviations: ARCI Autosomal recessive congenial ichthyosis; IFAP Ichthyosis Follicularis Atrichia and Photophobia; SCID severe combined immunodeficiency; AD autosomal dominant; AR autosomal recessive; CVID combined variable immunodeficiency; COFS Cerebro-oculo-facio-skeletal syndrome; EB epidermolysis bullosa. Diagnoses are marked when found in textbooks or reviews (*) or when associated with a collodion membrane ©

Table 2. Laboratory tests performed in patients with neonatal erythroderma

Laboratory test in general	Deviation expected	Altered in specific diagnosis or in common NE	Reference(s)
Sodium / potassium	↓↑	Common	1,3-5,7,9
Serum albumin	↓	Common	1,3-5,7,9
Complete blood count, leuko diff and platelets	↓↑	Common, NS, OS	1,4,9,83,97
Hemoglobin	↓	Common	5
Erythrocyte sedimentation rate	↑	Common	5
Serum creatinine and serum urea	↑	Common	7
C-reactive protein	↑	Common	9
Laboratory test on indication			
Capillary blood gas	ketoacidosis	Common	1
Natural Killer (NK-) cells	↓	NS	98
Immunoglobulins IgE, IgG, and IgA	↓↑	NS, Omenn, AD, WAS, IPEX, IgA deficiency	12,84,97,98
T- and B lymphocytes	↓	PID	99,100
Serum zinc and alkaline phosphatase	↓	Acrodermatitis enteropathica	97
Biotinidase and holocarboxylase essays	↓	Biotinidase and holocarboxylase deficiency	97
Serum tryptase	↑	Diffuse Cutaneous Mastocytosis	73,101
Serum creatin kinase	↑	CDS	82
Ceruloplasmin and serum copper	↑	Menkes disease	43
Glucose	↓	Common	7,9
Ammino acids (urine)	↑	NS	83
Serum ammonia	↑	Metabolic diseases	7,9
Serum Calcium	↓	DiGeorge	102

Abbreviations: NS Netherton syndrome; OS Omenn syndrome; AD atopic dermatitis; WAS Wiskott Aldrich syndrome; IPEX Immunodysregulation polyendocrinopathy enteropathy X-linked; PID primary immunodeficiency; CDS Chanarin Dorfman syndrome.



jdV_18043_f1a.png



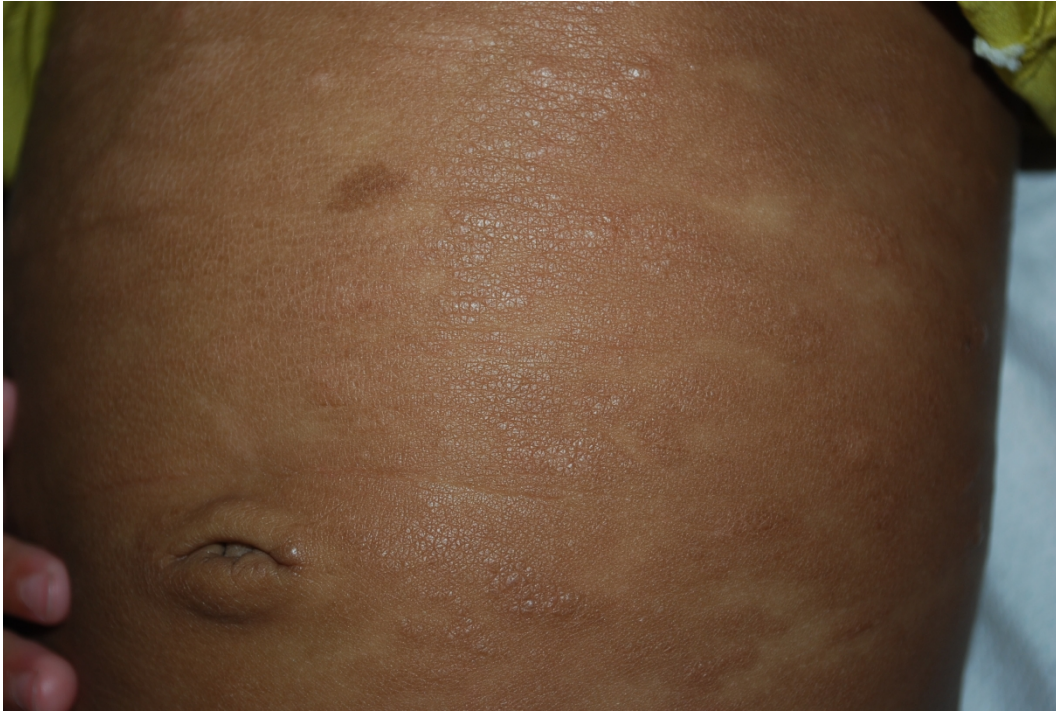
jdv_18043_f1b.jpg



jdV_18043_f1c.jpg



jdv_18043_f1d.jpg



jdv_18043_f1e.jpg



jdV_18043_f1f.jpg



jdV_18043_f1g.png



jdv_18043_f1h.jpg



jdV_18043_f1i.jpg

1 **Figure 2. A 6-step-approach of neonatal erythroderma**

